



AD Reporting

5 minute installation guide

Table of Contents

Introduction	2
Technical Support	2
Prerequisites	2
Installation	3
Adding a service account	4
Domain Configuration.....	4
Accessing the AD Reporting web page	5
After you installation please do the following.....	5
Forms based logon or Windows Authentication	6
Configuration File.....	6
Authorizing Users and Groups	7
Using HTTPS and SSL Certificates.....	7
Help and Support	7

Introduction

AD Reporting

AD Reporting is a web based program that is quick and easy to install and provides you with pre-built reports for Active Directory, the built in scheduler will allow you to schedule these reports to run when you need them.

Technical Support

This document will walk you through installing AD Reporting. Should you have any questions please contact us at support@dovestones.com.

Prerequisites

The following software should be installed before installing the application:

- Windows Server 2003, 2003 R2, 2008, 2008 R2 .
- Internet Information Services (IIS) 6.0, 7.0 or 7.5 with World Wide Web Service installed.
 - Under IIS 7 features enable IIS 6 Management Compatibility

- Microsoft .NET Framework 3.5 Service Pack 1 ([Download here](#)).
- ASP.NET 2.0 Enabled, In IIS Manager set to 'Allow' under 'Web Service Extensions'.
 - If you don't see ASP.NET under Web Service Extensions click here

You will also need:

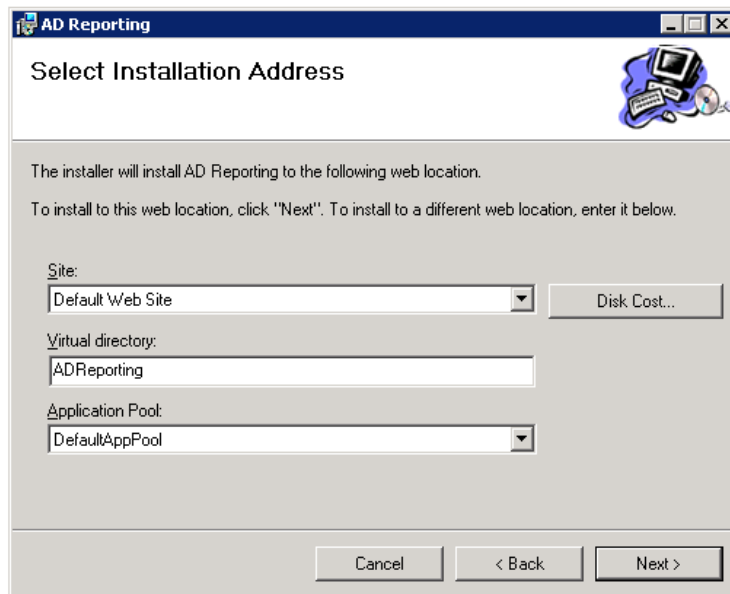
- A service account that has permissions to manage Active Directory objects, this account should have a strong password and 'Password Never Expires' checked.

Installation

Please follow these steps to deploy the application:

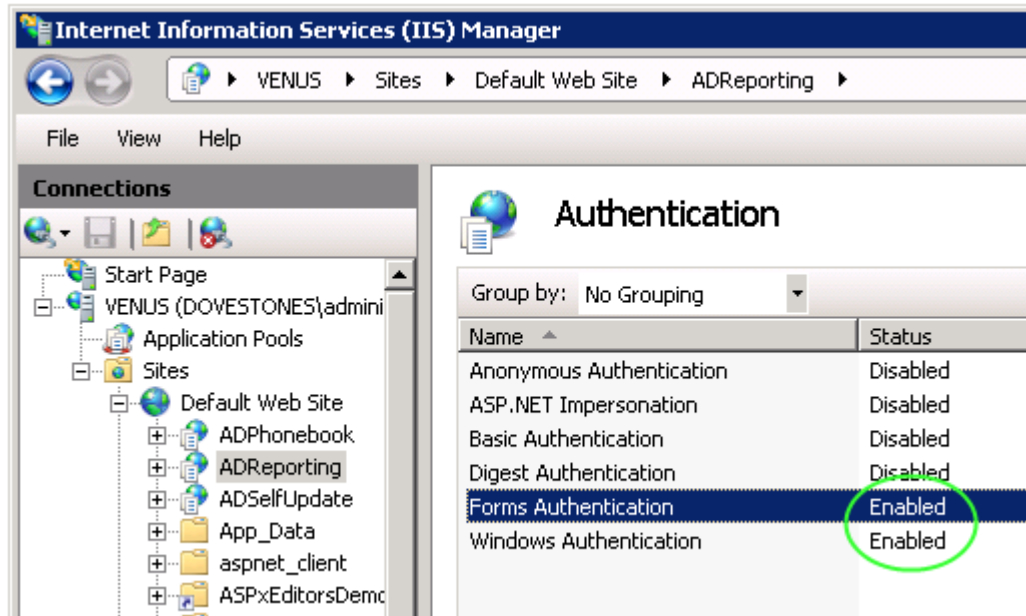
1. Run the *ADReportingSetup.msi* file and click *Next* at the welcome screen
2. Select the appropriate *Site*, *Virtual Directory* and *Application Pool* (example below).

Note: Choose an application pool that supports .NET Framework 2.0.



3. Wait for the installation to complete then click *Finish*.
4. Upon a successful installation, the installer should have installed the following:
 - a. Web application: The web application should be visible in IIS as a Virtual Directory under the web site you chose in Step 2.
 - b. AD Configuration: A configuration utility that maintains the domain(s) and service account settings.
 - i. You will find AD Configuration at *Start menu\Programs\Dovestones Software\AD Configuration*.

5. In IIS Manager allow both Windows and Forms based authentication to the installed virtual folder (ADReporting).



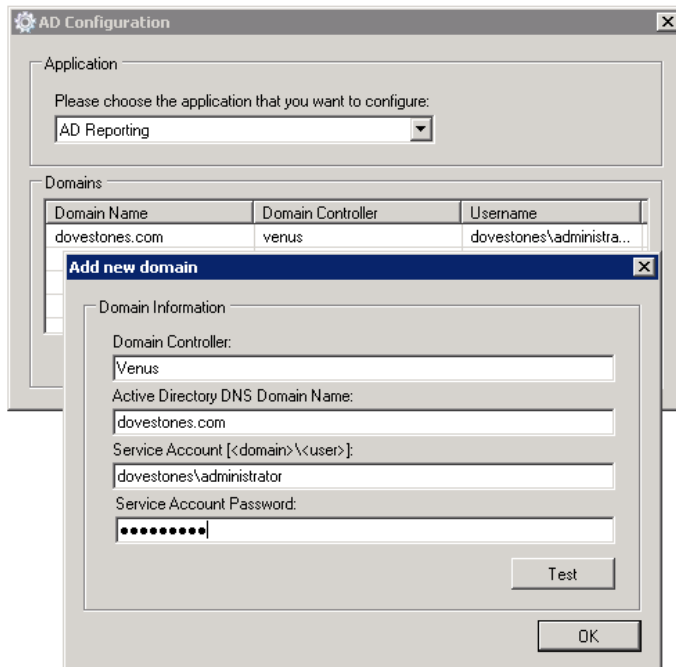
6. U You are now ready to add a service account that will be used to connect to Active Directory. See 'Adding a service account' below.

Adding a service account

Domain Configuration

Please follow these steps to configure the Active Directory domain(s) that the application will use.

1. Open the *AD Configuration* utility from the *Start Menu* → *All Programs* → *Dovestones Software* → *AD Configuration*.
2. From the *Application* drop down list, choose *AD Reporting*.
3. Click on the *Add Domain* button.
4. Enter the required domain information (see image below) and user credentials then click *OK*.
Note: You must supply user credentials for a domain administrator that has sufficient permissions to manage objects.



5. Repeat steps 3 and 4 to add more domains (optional)
6. Press 'Test' to check the username and password are valid.
7. Close the utility

Accessing the AD Reporting web page

When you have added your service account using the AD Configuration tool you can visit the AD Reporting web page, the address depends on the Virtual Directory name you chose during the installation, by default this is ADReporting. Your URL would be the web site address followed by the Virtual Directory name.

Example URLs:

<http://servername/adreporting/>

<http://172.168.0.100/adreporting>

<https://intranet.dovestones.com/adreporting/>

After you installation please do the following

- In IIS, allow both Windows and Anonymous authentication to the installed website
- Grant Read/Write privileges to the Network Service user on the Configuration directory

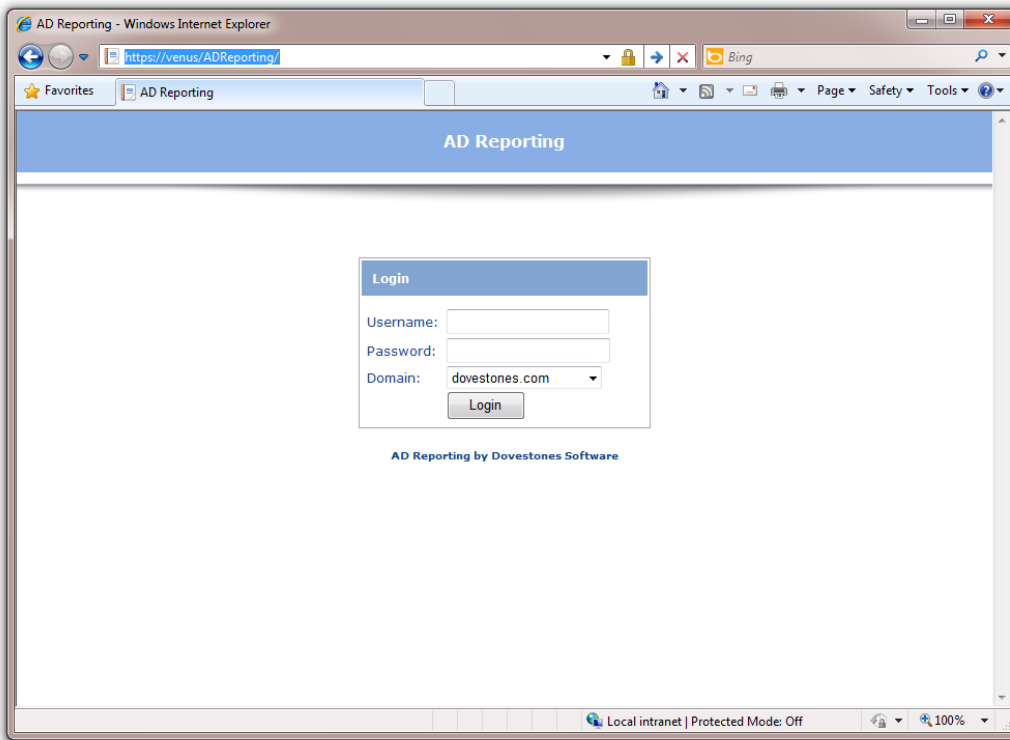
- Update the SMTP settings in the Scheduler.xml file
- If you did not install the website in the default virtual directory (ADReporting), update the ScheduleHandlerURL xml element in the ADReportsScheduler.exe.config, which resides in the "bin" directory, with the correct virtual directory.

Forms based logon or Windows Authentication

AD Reporting supports both Windows and Forms based authentication. By default Forms based authentication is used. To use Windows authentication, update the <authentication> element in the Web.config file (typically found in C:\inetpub\wwwroot\ADReporting\web.config) to:

```
<authentication mode="Windows">
```

The screen shot below shows the default forms based logon.



Configuration File

All the reports settings are stored in one XML file which can be found here: *Configuration\Settings.xml*. The application uses this file to build the page layout and execute the reports. Please contact us if you want further details on creating custom reports.

Authorizing Users and Groups

The AD Reporting application uses Windows Authentication to authenticate and authorize its users. By default, only members of the Administrators group are allowed access. To change this setting, you need to modify the "authorization" element in the web.config file.

To add a new group, you can simply add the following line right under the first "deny" element:

```
<allow roles="USER_GROUP"/>
```

You can also authorize just one user by adding the following line:

```
<allow users="DOMAIN\USERNAME"/>
```

Below is an example:

```
<authorization>
  <allow roles="Administrators"/>
  <allow roles="USER_GROUP"/>
  <allow users="DOMAIN\JSmith"/>
  <deny users="*/>
</authorization>
```

Using HTTPS and SSL Certificates

We recommend you install a SSL certificate so the web site is accessible using HTTPS.

Help and Support

If you require any help installing or configuring AD Reporting contact support@dovestones.com.